

F&M
Endorsed for Sure!

ENGINEERING, TESTING
ASSESSMENT & CERTIFICATION

COMPANY PROFILE

MD's MESSAGE

For me the dream is always a distant reality, it is with this belief that I have started F&M (Private) Limited, an Inspection Company with the prime objective to provide solutions which addresses clients' needs.

In my past experience, I have achieved many milestones and always considered that once a milestone is achieved, there is always another to come.

F&M within a very short span of time has established itself as one of the highly respected company in Pakistan.

We have also signed an agreement and feel extremely honored to partner with Oceaneering International, Inc. to provide a new approach to delivering Asset Integrity Solutions to the Pakistan market. It provides the ability to engage with our customers early in the project life cycle, ensuring integrated project execution and leveraging next generation inspection technology and integrity management capability. Collaborating with Oceaneering, an established and respected global energy services company, is exciting and will increase the competitiveness of both companies in the region.

Apart from the aforementioned credentials, I have served as President of Korangi Association of Trade and Industry

(KATI), the largest Industrial Association of Pakistan, President of Marketing Association of Pakistan (MAP) and have also served as Managing Committee Member of Overseas Investors Chamber of Commerce & Industry (OICCI) which was instrumental in bringing the standardization for business sustainability of our members.

As a founder member of Pakistan-Sri Lanka and Pakistan-Russia business forums, I played a leading role in promoting bilateral trade between the respective countries. In addition to above, being the President of the Swiss Business Council; an association of Swiss Companies in Pakistan, I have led a delegation to Switzerland to showcase the business opportunities in Pakistan, later on, which became a source of new ventures between the Swiss and Pakistan business community.

F&M takes active part in CSR activities. On a social network, I was involved in bringing upliftment for deserving people by serving as the President of Rotary Club.

The journey is never-ending; however, with the support of our valued clients and team members, I am positive that F&M will continue to achieve many deserving milestones of excellence in the years to come and will soon be a prominent Inspection Company of Pakistan.

F&M
Endorsed for Sure!

ENGINEERING, TESTING
ASSESSMENT & CERTIFICATION

Syed Farukh Mazhar
Managing Director



INTEGRITY



TRUST

We build trust through a professional and ethical approach. We believe that integrity and trust are the most important and key factors for the success of an organization and its individuals.



HONESTY

We have always believed in honesty for ever lasting relationships.



ACCOUNTABILITY

We accept the consequences of our choices and do not blame others for our actions.



PRINCIPLES

We set principles on merit basis and not on personal preferences and references.



BRIEF INTRODUCTION

F&M was established with the aim to provide one window solutions for the Industries of Pakistan with respect to international codes and standards, quality and integrity. We are committed and determined to deliver innovative services and solutions that will assist our customers to accomplish their goals.

SERVICES WE OFFER

F&M's diversified team of Certified Engineers and Technicians, offer services for Civil, Mechanical, Electrical, Lifting Equipment, Marine and Off shore Engineering, Supply Chain, Project, Asset Management and many more.

The background of the slide features a photograph of several hands of different skin tones reaching in from the edges to form a circle in the center. The hands are positioned as if they are about to clasp together. The overall image is set against a white background with a dark grey diagonal overlay on the left side.

F&M
Endorsed for Sure!

CIVIL ENGINEERING

With the emerging engineering projects generally and also due to the development of China Pakistan Economic Corridor (CPEC) program particularly, the construction industry is growing.

The construction business traditionally involves design, procurement, execution and maintenance. F&M ensures quality, safety, cost management and timely delivery which are the key factors for success of any project.



CIVIL SERVICES

<p>In-Service Buildings</p> <ul style="list-style-type: none">• Structure Stability Assessment and Stability Certificate• Structure Integrity• Structural Seismic Analysis• Structural Analysis through Software• Laboratory testing including material, concrete, cement, soil, asphalt, aggregate, chemical, water testing etc.• Drawing review and as-built drawings preparations• Structure Audit• Re-strengthening and Retrofitting Techniques	<p>Non-Destructive Testing</p> <ul style="list-style-type: none">• Rebound Hammer Test for concrete surface strength• Ultrasonic Pulse Velocity to identify homogeneity, cracks etc• Ferro scanner for rebar scanning• Bar tracker for rebar identification <p>Destructive Testing</p> <ul style="list-style-type: none">• Compressive strength of concrete through core recovery.• Chemical testing includes sulphate, chloride and pH.	<p>On-going Construction</p> <ul style="list-style-type: none">• Project Management• QA/QC Supervision• Material Testing• Laboratory Testing• Geotechnical Investigation• Finishing Supervision• Construction Supervision• Road Construction Supervision	<p>Infrastructure</p> <ul style="list-style-type: none">• Structure Assessment• Jetty Inspection• Bathymetric Survey• Underwater Videography• Destructive Testing• Pile Testing• Non-Destructive Testing
---	--	--	---

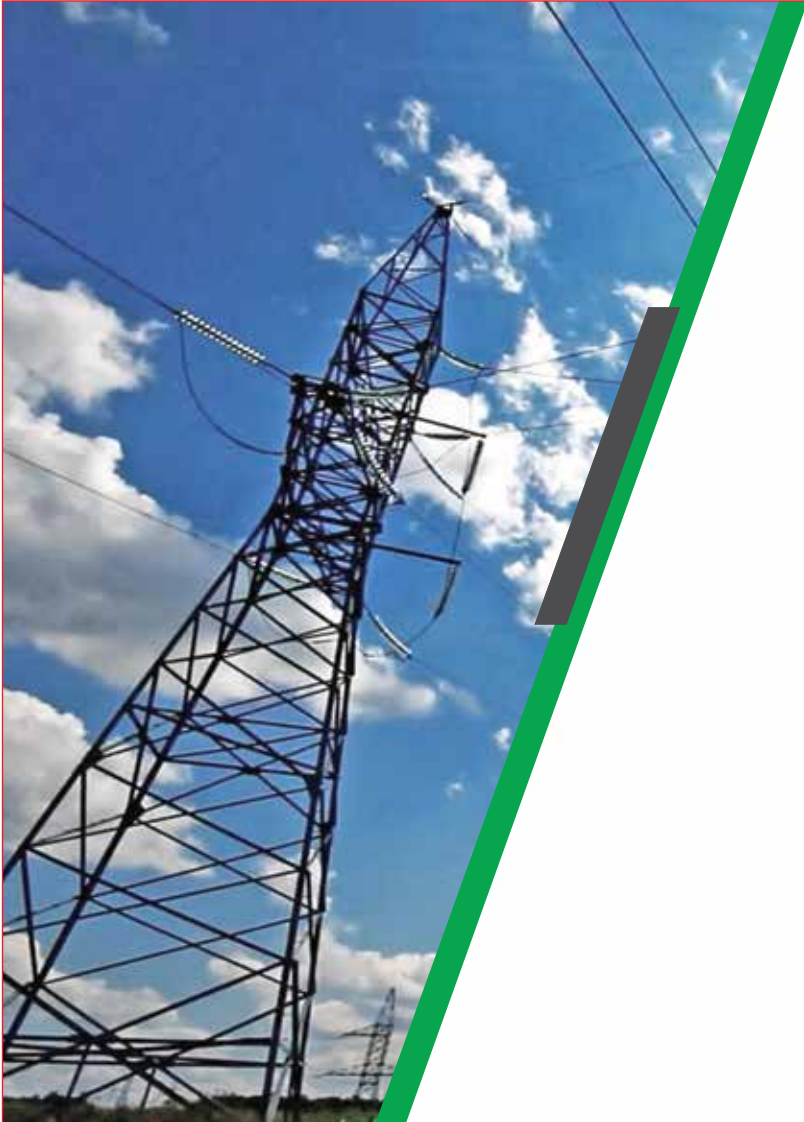
MECHANICAL ENGINEERING

Our expertise in mechanical engineering is exceptionally versatile and this can assist our clients in designing, analyzing, manufacturing and maintaining mechanical systems with conventional and advanced non-destructive testing techniques.



MECHANICAL SERVICES

<p>API Inspections</p> <ul style="list-style-type: none"> • Integrity Assessment of Tanks, Vessels, Pipelines as per API-653, 510 & 570 • Risk Based Inspection of Plants etc. as per API-580 Standard with RBI Software. • Non-Intrusive Inspections • Fitness 	<p>Lifting Equipment Inspection</p> <ul style="list-style-type: none"> • Mobile & Hydraulic Cranes • Overhead Cranes • Mechanical Cranes • Chain Block & Hoist • Fork Lifters / Stackers • Elevators • Cargo Lift • Passenger Lift • Lifting Accessories 	<p>Cathodic Protection</p> <ul style="list-style-type: none"> • ECDA / ICDA • DCVG Survey • CIPS Survey • Soil Resistivity Survey • CP Design • Installation of CP System • CP Audits & Assessment • CP Consultancy • Interference Survey • CP Monitoring • Supply of CP Material 	<p>Warehouse Pallet Rack Inspection</p> <ul style="list-style-type: none"> • Inspection of Warehouse Pallet Racks as per Standard Storage Equipment Manufacture Association UK (SEMA) • Construction Supervision , QA /QC during installation of New Racks
<p>Non-Destructive Testing</p> <ul style="list-style-type: none"> • Conventional & Advance, MPI/DPT, UTG, UFD, Holiday, DFT, RT, LRUT, TOFD, PAUT, CHIME, CUI, MFL, Eddy Current, PMI etc. 	<p>Bowser / Tank Lorries Inspection</p> <ul style="list-style-type: none"> • Physical & Visual Checks (Inside / Outside) • Operational Checks • NDT Testing • Hydrostatic Leak Testing 	<p>Technical Staff</p> <p>A complete portfolio of recruitment solutions include:</p> <ul style="list-style-type: none"> • Contract recruitment (for providing local & expatriate personnel) • Permanent recruitment for short & long Term Multiple Disciplines 	
<p>SAFETY & TRAINING SERVICES</p>			
<ul style="list-style-type: none"> • Safe Operations of Industrial Trucks (Forklift / Stackers) • Safe Operation of Cranes • Gas Stations / Petrol Pumps Staff Trainings • Evaluation / Assessment of Riggers • Evaluation / Assessment of Scaffolders • Evaluation / Assessment of Crane Operators 		<ul style="list-style-type: none"> • Evaluation / Assessment of Forklift Operators • Safety Awareness for Supervisors • Scaffolding Inspection & Erection - Basic Level • Scaffolding Inspection & Erection – Advance Level • Rigging & Slinging - Basic Level • Rigging & Slinging - Advance Level 	



ELECTRICAL ENGINEERING

We have the expertise in electrical engineering consultancy regarding maintenance, efficiency, and cost-effectiveness.

We provide professional services for planning, designing, assembling and sustaining the power transmission through distribution network. We identify electrical hazards and minimize the risk of accidents like fire due to short-circuiting etc. in compliance with Industry standards and best practices.

ELECTRICAL SERVICES

<p>Transformer Inspections</p> <ul style="list-style-type: none"> • Integrity Assessment of Power Transformers as per IEC-60076 & RLA Analysis. • Integrity assessment of Transformers on the basis of C & DF, Insulation Resistance, Winding Resistance, Transformer Turns Ratio, Partial Discharge Tests 	<p>Switchgear Inspection</p> <ul style="list-style-type: none"> • Hi-pot Test • Insulation Strength Test • Breaker Timing Test • Dew Point Test • Contact Resistance Test • All Testing Done on IEC Standards IEC-62271 	<p>Electrical Gap Analysis</p> <ul style="list-style-type: none"> • Inspection of Electrical Panels using Thermography Techniques & Survey • Load Analysis & Losses Identification 	<p>Grid Testing & Commissioning</p> <ul style="list-style-type: none"> • Grid Installation Design & Supervision Consultancy • Grid Testing
<p>Project</p> <ul style="list-style-type: none"> • Energy Audit • Building Electrical Integrity • Project QA/QC • Project Testing & Inspection • Building Electrical Consultancy 			

LABORATORIES

Our laboratory services are primarily focused on the testing of metal products and building products and are fully based on quality and standards. In general, the tests are performed in order to verify material characteristics, such as tensile strength, compressive strength, bending strength or chemical composition.

Our laboratory services include:

CONSTRUCTION MATERIAL TESTING

When you require the services of Independent and quality laboratory services, we would be the better choice as we solely follow codes and standards and never compromise on the quality.

METAL TESTING

This service covers the mechanical properties, non-destructive testing, corrosion resistance, and chemical composition analysis.



LABORATORY SERVICES

FINE & COARSE AGGREGATE		ASPHALT TESTING	
<ul style="list-style-type: none"> • Gradation Analysis of fine & coarse aggregate • Soil Classification (Atterberg Limits and Grain Size Distribution) • Hydrometer Test • Moisture Content • Specific Gravity • Bulk Density • Relative Density • Sand Equivalent Test • Porosity/Void Ratio • Unit weight of fine & coarse aggregate • Soil pH, TDS, CL₂, SO₄, CaCO₃ • Organic Content • Natural Density and Moisture Content • Moisture-Density Relations (Standard and Modified) • Maximum and Minimum • Density (Granular Soils) • Crushing Value 	<ul style="list-style-type: none"> • Impact Value • Potential Reactivity (Alkali Reaction Test) • California Bearing Ratio (CBR) • Unconfined Compression • Point Load Strength Test • Triaxial Shear • Direct Shear • Consolidation • Permeability • Los Angeles Abrasion • Sodium & Magnesium Sulfate Soundness • Clay Lumps and Friable Particles • Flat and Elongated Particles • Compressive Strength Testing • Concrete Cylinders • Concrete and Rock Cores • Grout Prisms, Grout Cubes and Mortar Cubes • Concrete Masonry Units • Flexural Strength Testing - Concrete Beams • Concrete Beam Shrinkage 	<ul style="list-style-type: none"> • Absorption • Density • Extraction & Gradation • Marshall Stability and Flow • Flash Point of Bitumen • Penetration Test • Ductility Test • Specific Gravity of Bitumen 	<p>CEMENT TESTING</p> <ul style="list-style-type: none"> • Setting Time (Initial & Final) • Consistency • Fineness • Le-Chartelier's Soundness Expansion • Compressive Strength of Cement
<p>Geotechnical Investigation</p> <ul style="list-style-type: none"> • Boring / Drilling Rotary Method <p>Sampling</p> <ul style="list-style-type: none"> • Shell by Tube / Disturbed / Rock Coring <p>Field Testing</p> <ul style="list-style-type: none"> • Standard Penetration Test (SPT) • Dynamic Cone Penetration Test (DCPT) 	<p>CONCRETE MIX DESIGN</p> <ul style="list-style-type: none"> • Cement • Water • Aggregates • Admixtures 	<p>CORING OF CONCRETE & PAVEMENT</p> <ul style="list-style-type: none"> • Compressive Strength • Extraction of Asphalt 	<p>WATER TESTS</p> <ul style="list-style-type: none"> • Sulphate Content • pH Value • Total Dissolve Solids (TDS) • Total Soluble Salts (TSS) • Carbonate Content • Chloride Content • Organic Content

CERTIFICATION & TRAINING

F&M (Pvt.) Limited delivers a series of powerful skill development programs essential for achieving results in management systems and strategic initiatives. We offer training courses at our office via a monthly public training schedule and for larger groups we also arrange training sessions at client's premises. We develop customized sessions meeting our client's unique needs.

We have a team of experienced corporate trainers and speakers who deliver training courses in the simplest interactive manner which are based on class presentations, mock audits, assignments, role play, examinations etc.

We also offer various health and safety courses which helps to identify the legislation which is applicable to client's business and the steps which are required to meet legal requirements. Additionally, all those who attend the course are able to get exclusive impartial advice from our health and safety expert by email for any further guidance. All training sessions are customized to meet industrial requirement from basic to advanced level with international certification. Duration of training varies from single day to longer period as per requirement.

Quality
management

ISO
9001

mer

Continual
improvement

C

R

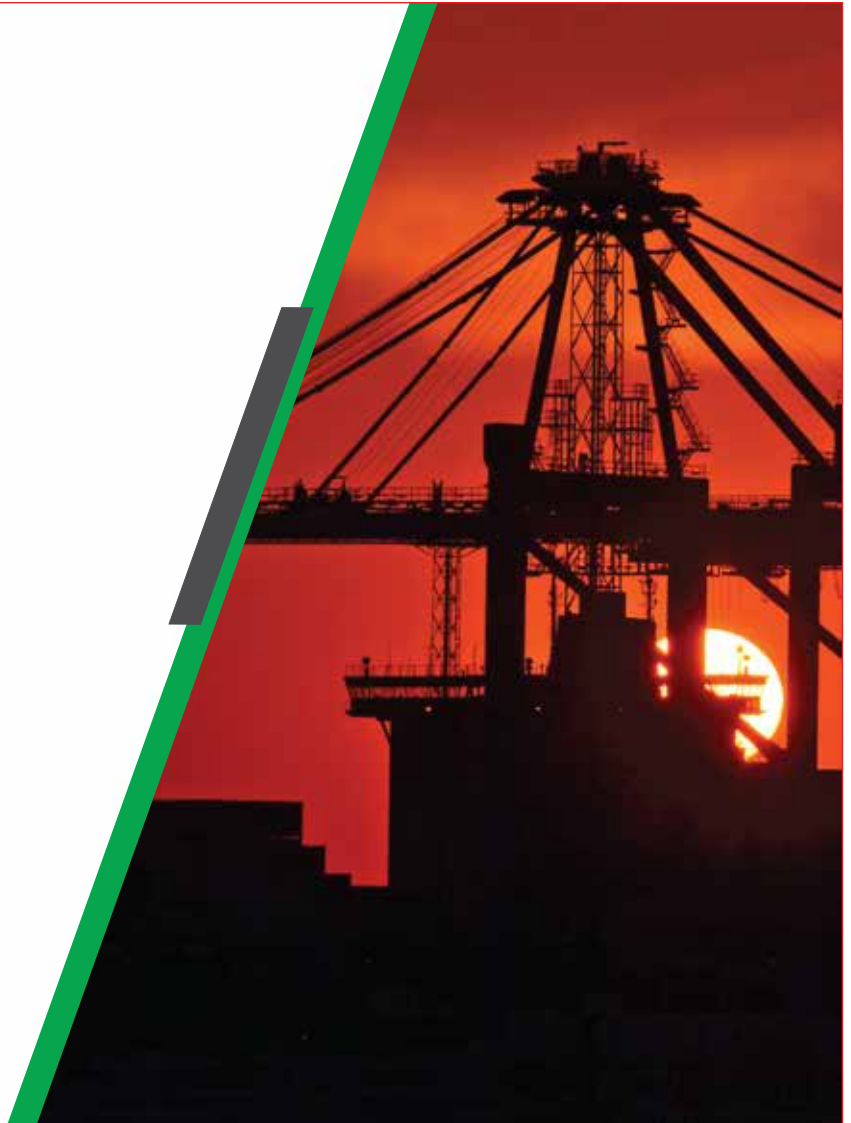
CERTIFICATION COURSES

<p>Training Courses</p> <ul style="list-style-type: none"> • NEBOSH-IGC • IOSH Managing Safely • IOSH Working Safely • HABC Accredited • British Safety Council • RSPH • CIEH • OSHA 	<p>Awareness & Implementation Training Courses:</p> <ul style="list-style-type: none"> • ISO 9001 - Quality Management System • ISO 14001 - Environment Management System • ISO 45001 - Occupational Health & Safety Management System • ISO 22000 - Food Safety Management System • ISO/IEC 27001 - Information Security Management System • ISO 50001 - Energy Management System • ISO 22301 - Business Continuity Management System • ISO 31000 - Risk Management System • ISO 20121 - Sustainable Event Management 		
<p>General Training Courses:</p> <ul style="list-style-type: none"> • Quality Management System Awareness • Environmental Management Awareness • Health & Safety Management System Awareness 	<ul style="list-style-type: none"> • Energy Management System Awareness • Hazards Identification and Risk Assessment Process • Environmental Aspects-Impacts • Food Safety Management Awareness • Awareness on Local Labor Law 	<ul style="list-style-type: none"> • Social Compliance Requirements • Corporate Social Responsibility • Integrated Management System • Certified HSE/Safety Officer • HSE Essentials • Incident Investigation / RCA • Train the Trainer (HSE) • Internal Auditing Techniques 	<ul style="list-style-type: none"> • HACCP Awareness • HALAL Awareness • Working on Height • Confined Space • Emergency Preparedness • First Aid • Fire Fighting • Construction Safety

MARINE & OFFSHORE SERVICES

TYPICAL SERVICES

- | | |
|--|---|
| <ul style="list-style-type: none">• Hydrographic Surveys• Multibeam (Shallow and Deep Water)• Single Beam• Side Scan Sonar• Magnetometer• Sub-bottom Profiling• Precision RTK and Static GPS Surveys• Topographic Surveys | <ul style="list-style-type: none">• Boundary Surveys• Reconnaissance Surveys• Revetment Surveys• Beach Surveys• Wetland and Barrier Island Restoration Surveys• Reservoir Inspection Surveys• Dredge Disposal Surveys• EEZ Surveys• Nautical Charting Surveys |
|--|---|



SUPPLY CHAIN SERVICES

Pre-Shipment Inspection	Post-Shipment Inspection
Vendor Shop Inspection Vendor Surveillance	Quality Assurance / Quality Control Inspection QA/QC during Manufacturing
Used Plants and Equipment Inspections as per regulatory requirements	Loading /Unloading Supervision



SOIL, WATER MANAGEMENT AND REVERSE OSMOSIS PLANTS

We value the goals of our clients, both in the public and private sectors, by providing consultancy and technical supervision and by conforming to international standards in the field of soil and water management solutions. We ensure high quality, effective and professional project execution in the field of water management, soil analysis, design and construction of foundations and Industrial waste management.

We are equipped with broad based technological expertise, domain knowledge and hands on practical skills in the disciplines of ground water exploration and survey, reverse osmosis/water purification plant, environmental studies and consultancy, piling and pile load tests, civil construction and geological exploration in the forms of mapping, petro-graphic analysis and rock and mineral identification.



SOIL, WATER MANAGEMENT AND REVERSE OSMOSIS SERVICES

Reconnaissance Survey:

- Study the geology and topography of the area
- Identify potential area for test bore drilling

Geo-physical Survey & Electrical Resistivity Survey

- Identify prospective aquifers
- Determine the vertical and lateral extents of fresh and marginal quality aquifers including the position of buried channels and water table conditions
- Delineate the fresh-saline interface configuration
- Select prospective test bore locations

Drilling of Water Well / bore and Well Development

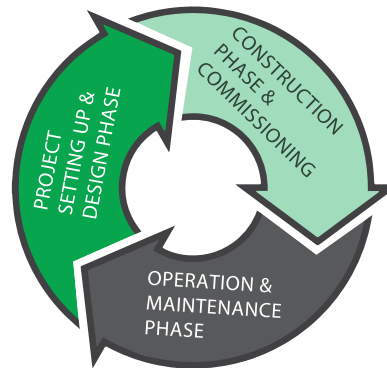
PROJECT SERVICES

MECHANICAL, CIVIL & ELECTRICAL

Design Review & Design Vetting	Project Construction Supervision
Project QA/QC Services Mechanical, Civil & Electrical	Project Expediting Services
Project QHSE Management & Supervision	Project Inspection Services

TYPICAL ASSET LIFECYCLE OF BUILDING INFRASTRUCTURE

Design Review and Vetting
 Due Diligence
 Tendering Support
 Project Feasibility Study
 Land Transactions Management
 Geotechnical Engineering
 Structural Engineering
 Materials Consulting
 Quality Control and Planning
 Project Management & Monitoring
 HSE Studies



Operation & Maintenance Planning
 Risk and Safety Assessment
 Structure Analysis and Seismic Analysis
 Structure Integrity
 Material Testing (DT & NDT)
 Document Review
As-built Drawing Preparation
 Quality Management & Audits
 Quality Indicator Monitoring
 Forensic Studies
 Visual Inspection
 Building Technical Control for Insurance Companies
 HSE

Budget Controlling
 Bar Bending Scheduling
 Planning
 Piling Work
 QA/QC
 Project Management & Monitoring
 Construction Site Supervision
 Independent Site Engineer
 Program Management
 Geotechnical Consulting
 Seismic Analysis
 HSE Management
 Contractor's Quality Control Plan Supervision
 Non-Destructive Testing
 Construction Material Testing
 On Site Testing Facility
 Technical Assistance During Commissioning
 As-built Document Review

F&M

Endorsed for Sure!

ENGINEERING, TESTING

ASSESSMENT & CERTIFICATION

CONTACT US:

Email:

queries@fnminspections.com

Phone:

+92-21 - 35110056

Website:

www.fnminspections.com

F&M (Private) Limited
Plot No. 384, Sector 7A, Korangi Industrial Area,
Karachi - 74900, Pakistan.